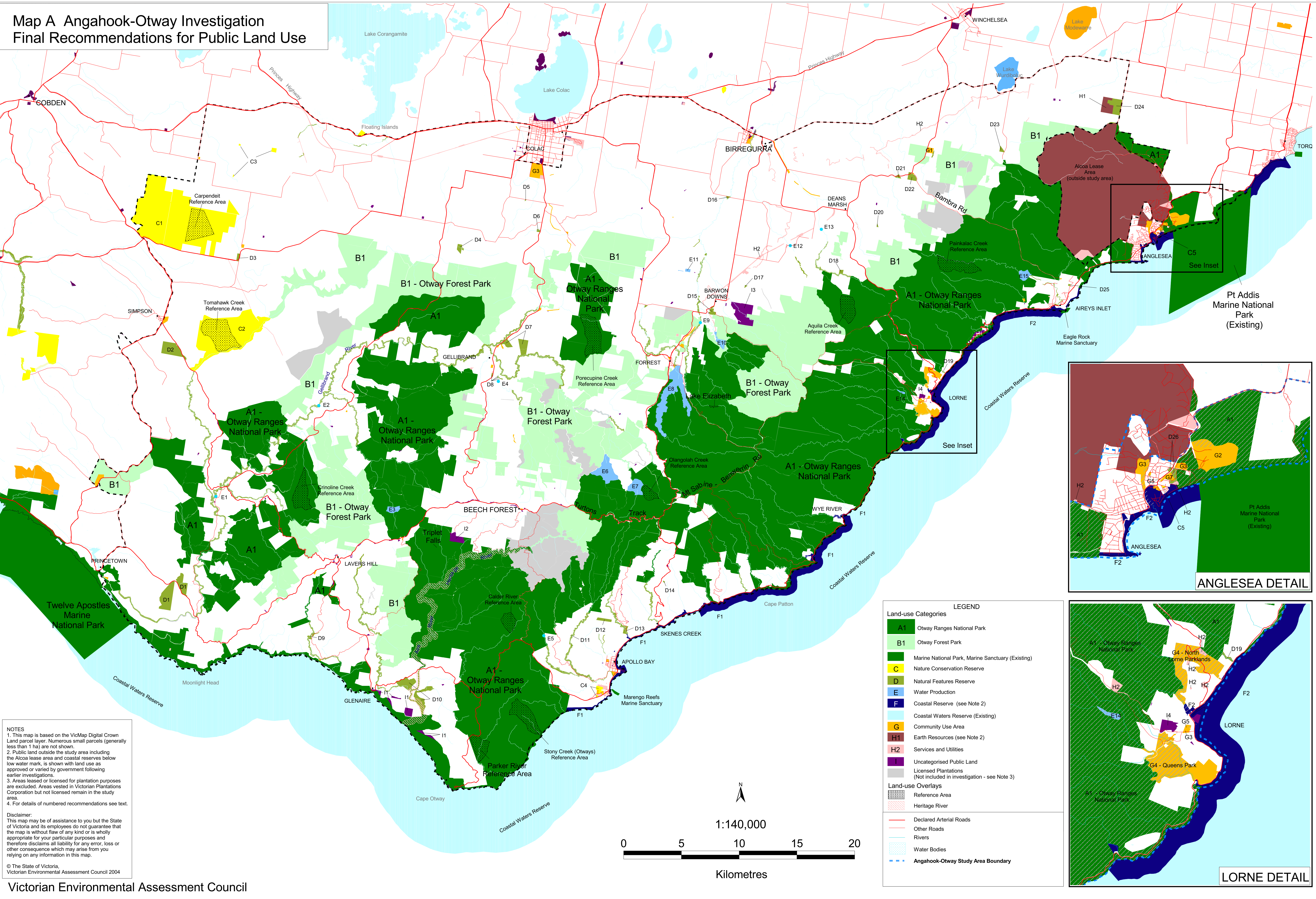


Map A Angahook-Otway Investigation
Final Recommendations for Public Land Use



NOTES
1. This map is based on the VicMap Digital Crown Land parcel layer. Numerous small parcels (generally less than 1 ha) are not shown.
2. Public land outside the study area including the Alcoa lease area and coastal reserves below low water mark, is shown with land use as approved or varied by government following earlier investigations.
3. Areas leased or licensed for plantation purposes are excluded. Areas vested in Victorian Plantations Corporation but not licensed remain in the study area.
4. For details of numbered recommendations see text.

Disclaimer:
This map may be of assistance to you but the State of Victoria and its employees do not guarantee that the map is without flaw of any kind or is wholly appropriate for your particular purposes and therefore disclaims all liability for any error, loss or other consequence which may arise from you relying on any information in this map.

© The State of Victoria.
Victorian Environmental Assessment Council 2004

LEGEND

Land-use Categories

- A1 Otway Ranges National Park
- B1 Otway Forest Park
- C Marine National Park, Marine Sanctuary (Existing)
- D Nature Conservation Reserve
- E Natural Features Reserve
- F Water Production
- G Coastal Reserve (see Note 2)
- H1 Coastal Waters Reserve (Existing)
- H2 Community Use Area
- I Earth Resources (see Note 2)
- J Services and Utilities
- K Uncategorised Public Land
- L Licensed Plantations
- M (Not included in investigation - see Note 3)

Land-use Overlays

- Reference Area
- Heritage River

Infrastructure

- Declared Arterial Roads
- Other Roads
- Rivers
- Water Bodies
- Angahook-Otway Study Area Boundary

